

Welcome to P3, P3/4 and P4

Miss Holmes, Mrs Turnbull and Miss Tsui

September 2020





Miss Holmes

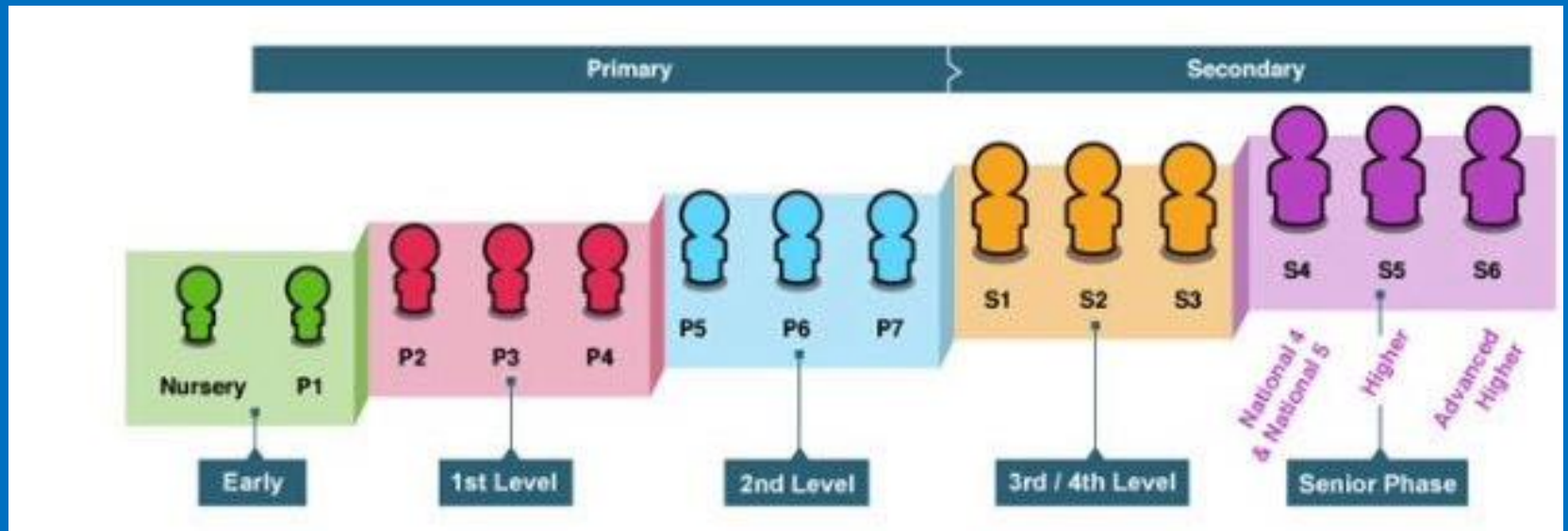


Mrs Turnbull



Miss Tsui

Curriculum for Excellence



This is a simple guide showing how children may move through the levels of CfE. All children progress at their own pace and work is differentiated to support their learning.

Our School Vision

Cornbank Primary School

where everyone works together to
inspire learners to be their best now
and in the future



Our School Values

#RISE

Respect
Inclusion
Safe
Excellence



Restorative Approach

- Aim is to support children to make positive choices
- Key questions used to support learners
- Parental involvement



Google Classrooms

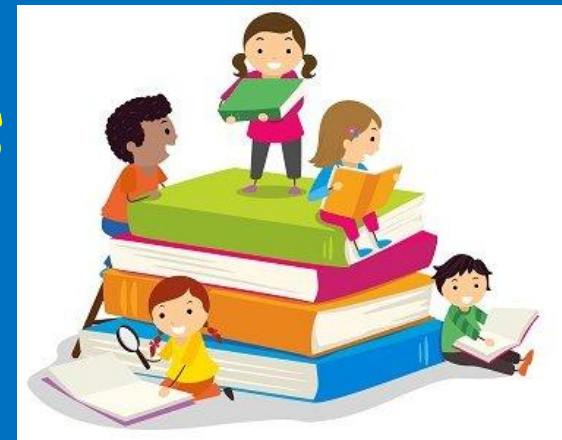
- Each class has a Google Classroom - lots of positive engagement during our school building closure and we are keen to continue using this technology
- More information to follow about how we will be using this
- Please continue to make contact through our school office - email or phone



Google Classroom

Literacy

- Reading
- Group Reading – information to follow
- Comprehension strategies
- Writing
- Linked to IDL
- A range of genres and styles
- Jolly Spelling and Grammar
- Listening and Talking
- Embedded across the curriculum



Maths & Numeracy

- Whole class teaching and group teaching with differentiated activities and games
- MUMP – Midlothian Understanding Mathematics Programme
- Non-routine questions
- Problem Solving



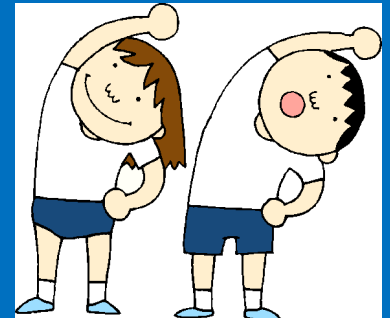
IDL

- Healthy Me
- Energy and Forces
- Penicuiik
- The Vikings



Health and Wellbeing

- Two session of Physical Education a week
- Cool in school
- Keeping myself safe
- Circle time
- School Values
- Rights Respecting Schools
- Healthy Eating/Lifestyles



Nut Aware School



Please be aware that we have children and staff with nut allergies in school therefore snacks and lunches should not have any products containing nuts.

Communication

[http:// cornbank.mgfl.net](http://cornbank.mgfl.net)

@CornbankPS



Cornbank.PS@midlothian.gov.uk



0131 271 4575

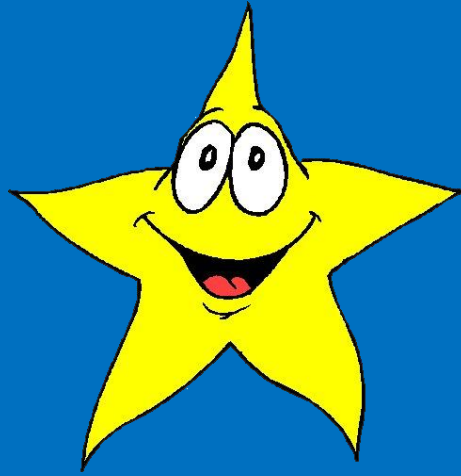


Chat to us 😊

Coming in to School

- Please consider our neighbours when parking
- JRSOs, Midlothian Council and Police support with this
- Safe routes and parking maps
- Children should dismount bikes and scooters in playground
- Children must wear helmets
- Please come as close to start time as possible
- Thank you for your support with physical distancing in the playground





Out of School Achievements

These are shared in class on our
Google Classroom Jamboards



Questions

- If you have any questions or feedback about this presentation, please fill it in at the link below.

<https://forms.gle/xdVF56e9zNwtG9EM7>



Thank you for your time.
We look forward to
working together this
year.

